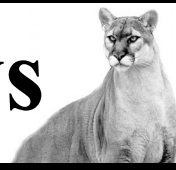




# Towns County Herald's Sporting News



## Lady Indians thump Bremen, season ends with loss to Wesleyan

JERRY KENDALL

Sports Writer

The Towns County High School Lady Indians Varsity Basketball Team captured its twenty fifth victory of the season last Tuesday night with a rousing home court victory over the Bremen High School Lady Blue Devils, the second place tournament team from Region 6A. The victory propelled the Lady Indians into the Elite Eight round of the Class A State Basketball Tournament for a game against the Wesleyan Lady Wolves of Norcross who ended the Lady Indians' season with a one sided loss, one game short of a second straight trip to the State Final Four in Macon.

The Lady Indians completed their season with a fine 25-6 record, including a second place finish in the Battle of the States Tournament, the regular season Region 8A Championship with a 15-1 record in the region, three straight wins for the Region Tournament Championship, and two victories in the Class A State Tournament. The region tournament championship was the first for the Lady Indians since the 1977 team won their only previous championship with an upset 54-51 overtime victory over Buford. The Lady Indians compiled a sparkling 53-10 record for the last two years when including last year's school record 28-4 finish and they threw in their second State Final Four appearance last year for good measure.

**HOT LADY INDIAN START TOO MUCH FOR BREMEN** - The Bremen Ladies took the opening tip on Tuesday and ran more than a minute off the clock before taking a shot and a 2-0 lead at the 6:57 mark of the first quarter. That would be their final lead of the game, however, as the Lady Indians struck for ten straight points and breezed out to a 22-5 lead at quarter's end.

They weren't through, however, as they added the first nine points of the second quarter for a bulging 31-5 lead at 6:46 of the second quarter, just nine minutes and fourteen seconds into the game. Six different Lady Indians put points on the scoreboard in that dynamite opening run with Gabby Arencibia including nine in the opening quarter and Nikki Winn five in the first quarter and seven of her team's first nine in the second.

The Lady Indians cooled off after that with Bremen able to rally to within 37-22 by intermission. The Lady Indians quickly regained control of the game in the third quarter, however, striking for twelve straight points and a 49-22 advantage by the 3:51 mark. Jordan Moss contributed six of the first twelve points and Ellie Parton four of the last five in the quarter with the Lady Indians in control by a 54-30 score. The two teams then played to a low scoring 6-6 standoff in the fourth quarter for a final margin of victory for the Lady Indians of 60-36.

A balanced scoring attack highlighted this game with Winn leading the way with 17 points but assisted ably by Arencibia with 13; Melissa Conrad, Moss and Parton with 8 each; and Amber Allen with 6. Winn also led in assists with 6 while Allen, Arencibia, and Moss contributed 3 each as tallied by your reporter.

**TOO MUCH FIRE POWER** - The Wesleyan girls entered the game with four Class AA State Championships in the last five years plus a fifth in Class A in 2002 and heavy favorites to win the Class A title this year. They were dropped from Class AA to Class A for this year after the Georgia High School Association (GHSA) eliminated a 1.5 multiplier elevating them and several other private schools by one classification for several years. In fact, with the multiplier gone and Randolph Clay from south Georgia having a drop in enrollment, all four state final four teams from last year in both Class AA and Class A wound up in Class A this year. And all eight, including the Lady Indians, qualified for the Class A state tournament this year.

After Wesleyan took the opening tip and an immediate 2-0 lead, the Lady Indians caused a bit of early concern for the Lady Wolves. The Lady Indians broke Wesleyan's full court press with Gabby

Arencibia assisting Ellie Parton on a short jumper at the 7:17 mark. Parton was fouled on the shot but missed the free throw with Melissa Conrad grabbing the rebound and scoring to give the Lady Indians a 4-2 lead.

A trey by Nikki Winn at 6:51 had the Lady Indians ahead 7-2 and Amber Allen found Arencibia open for another trey at 5:31 as the Lady Indians took a 10-4 advantage just under two and a half minutes into the game. With the score then 10-6 and Anne Marie Armstrong, last year's Miss Georgia Basketball as a junior, taking a seat on the bench with two fouls at 5:04, the Lady Indians seemed set for an even better run. It was not to be, however, as the Lady Wolves used their depth to rally to a 21-11 lead after one quarter.

Hot free throw shooting by the Lady Indians with two each by Jordan Moss and Winn and five for six accuracy by Parton had the Lady Indians within 34-20 by 3:42 of the second quarter but the Lady Wolves again finished strong for a 54-22 lead at intermission. A quick third quarter basket by Conrad and a trey by Winn had the Lady Indians within 58-27 barely a minute into the third quarter but a pair of late baskets by Conrad couldn't prevent the Lady Wolves from holding a 75-31 lead after three quarters.

While Wesleyan has a pattern of using a lot of players, it was quite noticeable that they continued their all out full court press until past the minute and a half mark of the third quarter. They then used several front line players during the early minutes of the mercy rule shortened fourth quarter in extending their margin of victory to 92-36 when the Lady Indians had three freshmen, a sophomore, and a junior on the court with none of them being starters.

Scoring leaders for the Lady Indians were Winn with 11 points, Conrad with 10, and Parton with 7 while Allen, Arencibia, Ben Pong, and Winn each contributed 1 assist as tallied by your reporter. Winn provided an inspired performance for the Lady Indians, playing against the advice of her doctor after battling illness during the week.

While the Lady Indians fell far short of victory against Wesleyan, fellow Region 8A opponent Social Circle fell just short of a trip to the State Final Four in a very competitive eleven point loss to Southwest Atlanta Christian in the other bracket. The Lady Redskins were disadvantaged greatly in this game by the loss of All Region 8A first team post player Maritza Heard to an injury with more than five minutes remaining in the game. Of course, the Lady Indians were winners of the Region 8A tournament by a similar ten point margin over the Lady Redskins on their home court two weeks earlier.

AN EDITORIAL COMMENT

**MENT** - With the Wesleyan girls being the one thousand pound canary in what would appear to have been a wide open state tournament among the other top contenders including the Lady Indians, perhaps a few words are appropriate to address this issue. I believe a pretty good case could be made that Wesleyan and several other sports minded schools have been allowed by the Georgia High School Association (GHSA) to make a mockery of high school basketball.

The Wesleyan girls program proves to a far greater extent as related to the number of outstanding players available than the Athens Christian boys that an all star team can be created in a metro area which is able to overpower small community schools and most private schools for that matter. The Wesleyan girls have won six post season games this year by an average of 51.7 points with other private schools actually being the first five victims. While it's easy to paint all private schools with the same brush of excesses in athletics, probably the vast majority of private schools work just as public schools limited by geographical boundaries to establish teams as competitive as possible from among the students routinely attending their schools.

Recruiting is the buzzword often used to explain dominance such as that of the Wesleyan Girls and the Athens Christian Boys. Whether some of their players have been recruited or not, it cannot be denied that they and several other schools have an abundance of talent not typical of a Class A

school. I believe Wesleyan and the GHSA would be especially hard pressed to give a plausible explanation as to how a school with 428 students can have so many ultra tall players without having an undue advantage.

The GHSA places emphasis on enrollment in establishing classification for schools with, I believe, an incredibly naive and irresponsible stance present as related to geographical boundaries. They restrict public schools to "attendance boundaries established by local boards of education from which a school normally draws its students", or an area limited to a 2007 population estimate of 10,894 for Towns County for example.

On the other hand, the "school service area for a member private school is the county in which the private school is located". With Wesleyan being located in Gwinnett County with a 2007 Census Estimate placing the population at 776,380, how can anyone justify that? And beyond the enormous population difference, it is very common to view college rosters of players in various sports with the home addresses of the athletes being outside the county where the private school they attended is located, leaving what would seem to be a failure by the GHSA to apply its own rules.

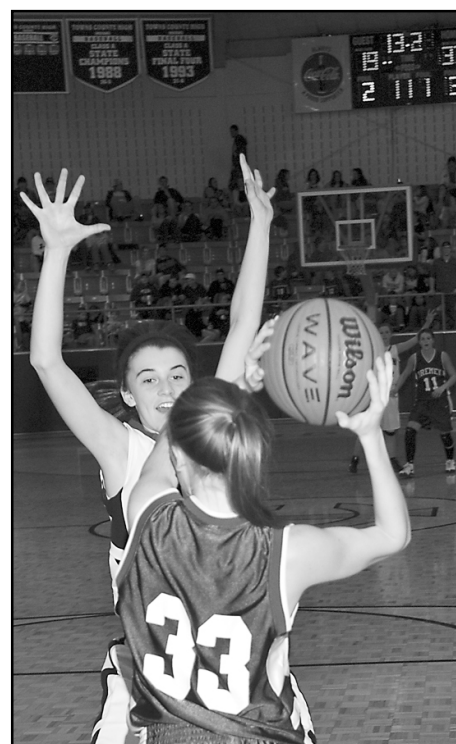
**HIGH SCHOOL BASKETBALL WRAPUP NEXT WEEK** - A wrap up of this and prior seasons for the Lady Indians along with a look at what Lady Indian and Indian opponents did in post season play this year is planned for next week's Herald.



Winn and Conrad try to move the ball against Wesleyan defenders in playoff loss. Photo by Lowell Nicholson



Ellie Parton, Nikki Winn and Amber Allen get radio time after 60-36 win.



Gabby Arencibia gets in the face of a Bremen Lady Blue Devil.



Missy Conrad and Jordsn Moss fight for the ball in State 2nd round play.



Lady Indian seniors Nikki Winn, Amber Allen and Ellie Parton show their emotions after their second round victory. Photos by Jim and Lisa Bryant



## SPORTSWATCH

by Jim Bryant

### Collegiate Baseball

YHC 3/10/10 Lake Land, IL 4/3/9  
YHC13/11 Truett McConnell 3/0  
YHC 13/7 Andrew 1/3  
Darton 3/5 Georgia Perimeter 1/6  
Gordon 9 Cleveland State 1

### Collegiate Softball

Chattanooga State 6 Central Alabama CC 4  
Truett McConnell 7/3 Cleveland State 4/1

### Collegiate Tennis

YHC 7 Piedmont College 2

### Prep Baseball

Towns County 12 Rabun Gap 1  
JV Towns County 2 Rabun County 4  
Lumpkin County 12 Gilmer County 3  
Lumpkin County 9 West Hall 0  
Lumpkin County 16 Flowery Brnch 9  
Dawson County 2 Pace Academy 12  
Gilmer County 7 East hall 2  
Hebron Academy 13 Monroe Area 1  
Pickens County 5 Chestatee 6  
Pickens County 2 Johnson 3  
Jefferson 4 Madison County 3  
Banks County 8 Elbert County 5  
White County 11 Johnson 0  
White County 7 Chestatee 8  
White County 2 West Hall 0  
Gilmer County 0 Gainesville 10  
Lakeview Academy 9 East Jackson 2

### Boys Class A State 2nd Round Basketball

Athens Academy 46 Darlington 86  
Athens Christian 74 North Cobb Christian 68

### Boys Class AA State 2nd Round Basketball

Riverside Academy 43 Blessed Trinity 47  
Pace Academy 66 Greenforest 75  
GAC 73 Chattooga 70

### Boys Class AAA State 2nd Round Basketball

Gainesville 60 Druid Hills 39  
North Hall 50 Cedartown 54  
West Hall 45 Columbia 65

### Girls Class A State 2nd Round Basketball

Towns County 60 Bremen 36  
Social Circle 63 Gordon Lee 49

### Girls Class A State 3rd Round Basketball

Towns County 36 Wesleyan 92  
Social Circle 55 SW Atlanta Christian 66  
Randolph-Clay 65 Emanuel County Inst 50  
Sav. Country Day 60 Hancock Central 33

### Girls Class AA State 2nd Round Basketball

Union County 56 GAC 66  
Rabun County 42 Manchester 30  
Buford 63 Coosa 48

### Girls Class AA State 3rd Round Basketball

Rabun County 38 Buford 70

### Girls Class AAA State 2nd Round Basketball

Stephens County 59 Lakeview-Ft Oglethorpe 75  
Hart County 59 Coosa 62  
East Hall 43 Dunwoody 46  
Chestatee 24 Carrollton 40

### Boys Prep Tennis

Pickens County 1 Chestatee 4  
Lakeview Academy 4 Riverside Academy 1

### Girls Prep Tennis

Lumpkin County 1 Johnson 4

### Boys Prep Golf

Lumpkin County 158 North Forsyth 166  
Pickens County 181 Dawson County 171

### Girls Prep Golf

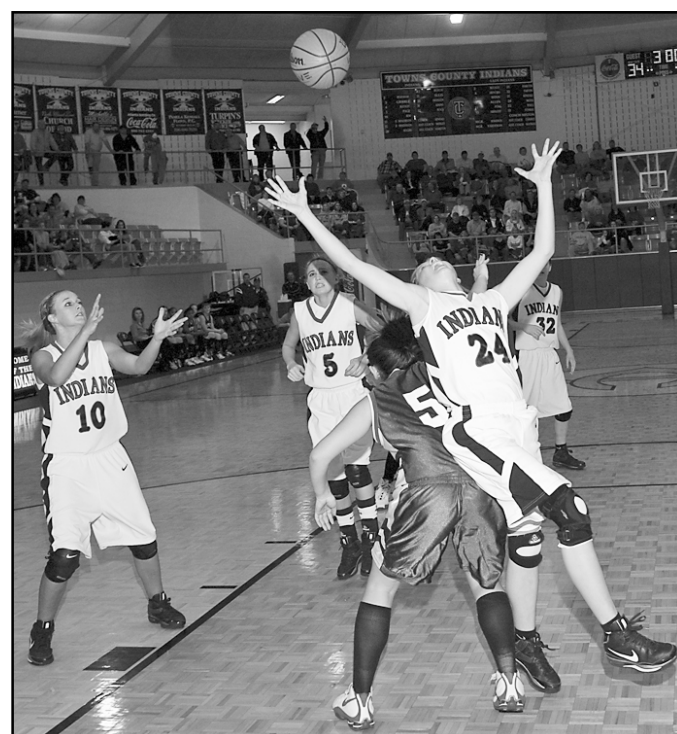
Pickens County 99 Dawson County 98

### Girls Prep Soccer

Towns County 1 Murphy, NC 1 (tie)

### Boys Prep Soccer

Lumpkin County 2 North Hall 3



Jordan Moss tries to get the ball over the back of a Blue devil.